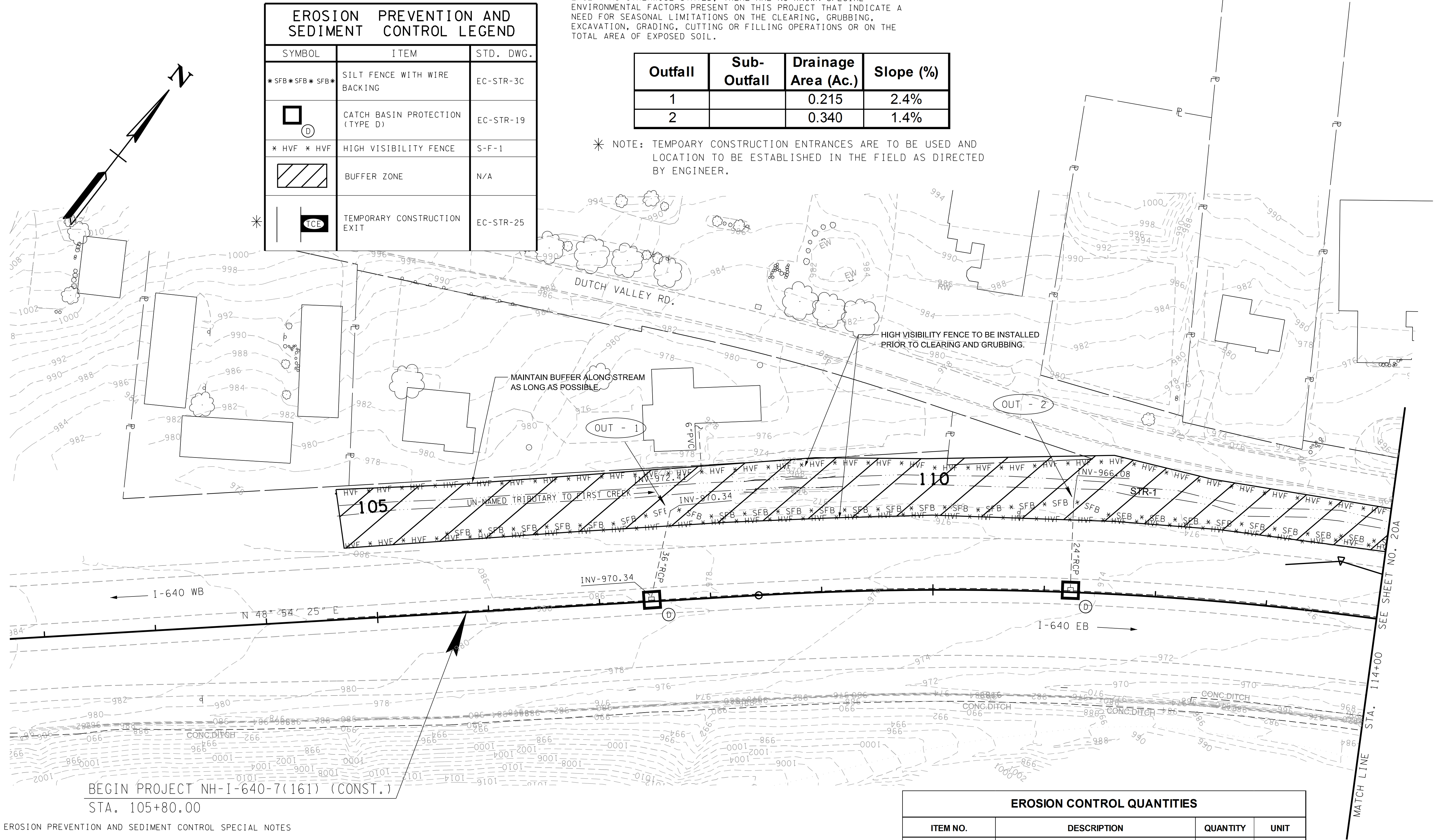


TYPE	YEAR	PROJECT NO.	SHEET NO.
R.O.W.	2014	NH-I-640-7(161)	20
CONST.	2015	NH-I-640-7(161)	20

KNOX CO.

47008-3150-44 (CONST.)

I-640



EROSION PREVENTION AND SEDIMENT CONTROL SPECIAL NOTES

STREAM/WETLAND

ANY WORK WITHIN THE STREAM CHANNEL AREA (I.E., FOR PIER FOOTING, RIP-RAP PLACEMENT, MULTI BARREL CULVERT/BRIDGE CONSTRUCTION, ETC.) SHALL BE SEPARATED FROM FLOWING WATER OR EXPECTED FLOW PATH AND PERFORMED DURING LOW FLOW CONDITIONS. ALL ITEMS USED WITHIN THE STREAM CHANNEL AREA FOR DIVERSION OF FLOW (OR EXPECTED FLOW), UNLESS SPECIFIED IN THE PLANS, SHALL NOT BE PAID FOR DIRECTLY BUT SHALL BE INCLUDED IN THE COST OF OTHER ITEMS. THIS NOTE EXCLUDES ANY ITEMS SPECIFIED IN THE PLANS FOR THE TEMPORARY DIVERSION CHANNELS, EC-STR-31 AND TEMPORARY DIVERSION CULVERTS, EC STR-32 FOR SINGLE BARREL CULVERT CONSTRUCTION.

A 30 FOOT NATURAL RIPARIAN BUFFER ZONE ADJACENT TO AND ON BOTH SIDES OF THE RECEIVING STREAM SHALL BE PRESERVED, TO THE MAXIMUM EXTENT PRACTICABLE, DURING CONSTRUCTION ACTIVITIES AT THE SITE. BUFFER ZONES ARE NOT SEDIMENT CONTROL MEASURES AND SHOULD NOT BE RELIED UPON AS PRIMARY SEDIMENT CONTROL MEASURES. THE RIPARIAN BUFFER ZONE SHALL BE ESTABLISHED BETWEEN THE TOP OF THE STREAM BANK AND THE DISTURBED CONSTRUCTION AREA. THE 30 FOOT CRITERION FOR THE WIDTH OF THE BUFFER ZONE CAN BE ESTABLISHED ON AN AVERAGE WIDTH BASIS AT A PROJECT, AS LONG AS THE MINIMUM WIDTH OF THE BUFFER ZONE IS MORE THAN 15 FEET AT ANY MEASURED LOCATION. EVERY ATTEMPT SHALL BE MADE FOR CONSTRUCTION ACTIVITIES NOT TO TAKE PLACE WITHIN THE BUFFER ZONES. BEST MANAGEMENT PRACTICES (BMPs) PROVIDING EQUIVALENT PROTECTION AS THE NATURAL RIPARIAN ZONE MAY BE USED. A JUSTIFICATION FOR USE AND DESIGN EQUIVALENCY SHALL BE DOCUMENTED WITHIN THE SWPPP. THE ENVIRONMENTAL AND ROADWAY DESIGN DIVISIONS SHALL REVIEW AND APPROVE THIS REVISION OF THE SWPPP BEFORE DISTURBANCE OF THE SITE PROCEEDS, UNLESS PREVIOUSLY EXEMPT IN THE NPDES CONSTRUCTION GENERAL PERMIT. WHERE ISSUED, ARAP/401 REQUIREMENTS WILL PREVAIL IF IN CONFLICT WITH THESE BUFFER ZONE REQUIREMENTS.

KNOWN EXCEPTIONAL TENNESSEE WATERS

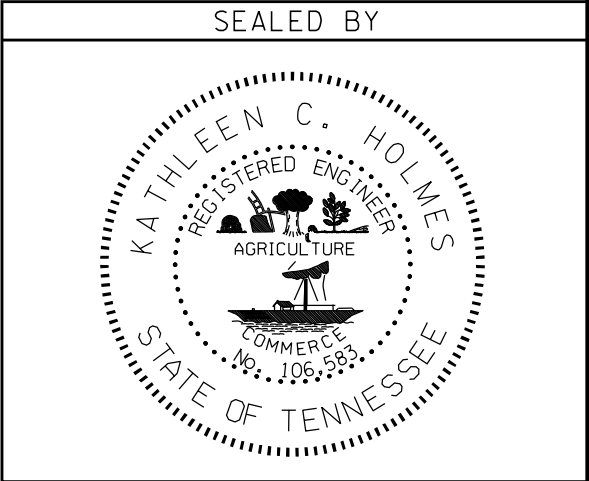
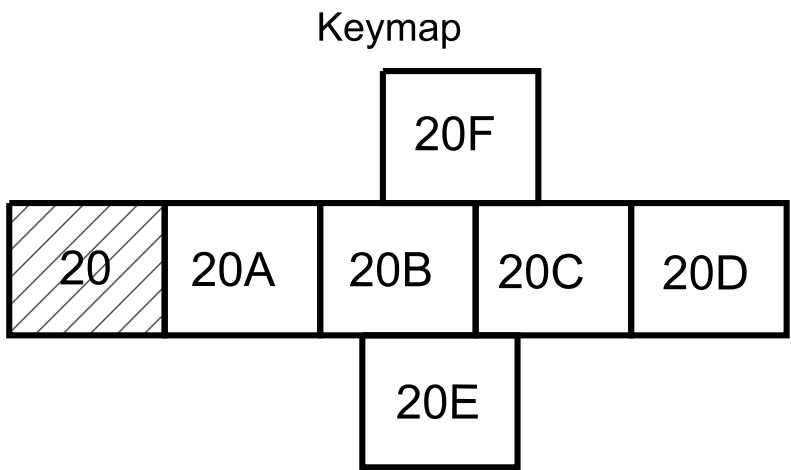
- (3) FOR PROJECTS THAT DISCHARGE INTO KNOWN EXCEPTIONAL TENNESSEE WATERS OR WATERS IMPAIRED BY SILTATION, AN OUTFALL IN A DRAINAGE AREA OF 5 ACRES OR MORE, A TEMPORARY (OR PERMANENT) SEDIMENT BASIN THAT PROVIDES STORAGE FOR A CALCULATED VOLUME OF RUNOFF FROM A 5-YEAR/ 24-HOUR STORM EVENT AND RUNOFF FROM EACH ACRE DRAINED, OR EQUIVALENT CONTROL MEASURES, SHALL BE PROVIDED UNTIL FINAL STABILIZATION OF THE SITE. THE ENVIRONMENTAL AND ROADWAY DESIGN DIVISIONS MAY BE CONTACTED TO REVIEW AND CONCUR WITH ANY REVISION OF THE SWPPP BEFORE DISTURBANCE OF THE OUTFALL PROCEEDS, UNLESS PREVIOUSLY EXEMPT IN THE NPDES CONSTRUCTION GENERAL PERMIT.
- (4) FOR PROJECTS THAT DISCHARGE INTO KNOWN EXCEPTIONAL TENNESSEE WATERS OR WATERS IMPAIRED BY SILTATION, A 60 FOOT NATURAL RIPARIAN BUFFER ZONE ADJACENT TO AND ON BOTH SIDES OF THE RECEIVING STREAM WITH THIS DESIGNATION SHALL BE PRESERVED, TO THE MAXIMUM EXTENT PRACTICABLE, DURING CONSTRUCTION ACTIVITIES AT THE SITE. BUFFER ZONES ARE NOT SEDIMENT CONTROL MEASURES AND SHOULD NOT BE RELIED UPON AS PRIMARY SEDIMENT CONTROL MEASURES. THE RIPARIAN BUFFER ZONE SHALL BE ESTABLISHED BETWEEN THE TOP OF THE STREAM BANK AND THE DISTURBED CONSTRUCTION AREA. THE 60 FOOT CRITERION FOR THE WIDTH OF THE BUFFER ZONE CAN BE ESTABLISHED ON AN AVERAGE WIDTH BASIS AT A PROJECT, AS LONG AS THE MINIMUM WIDTH OF THE BUFFER ZONE IS MORE THAN 30 FEET AT ANY MEASURED LOCATION. EVERY ATTEMPT SHALL BE MADE FOR CONSTRUCTION ACTIVITIES NOT TO TAKE PLACE WITHIN THE BUFFER ZONES. BEST MANAGEMENT PRACTICES (BMPs) PROVIDING EQUIVALENT PROTECTION AS THE NATURAL RIPARIAN ZONE MAY BE USED. A JUSTIFICATION FOR USE AND DESIGN EQUIVALENCY SHALL BE DOCUMENTED WITHIN THE SWPPP. THE ENVIRONMENTAL AND ROADWAY DESIGN DIVISIONS SHALL REVIEW AND APPROVE THIS REVISION OF THE SWPPP BEFORE DISTURBANCE OF THE SITE PROCEEDS, UNLESS PREVIOUSLY EXEMPT IN THE NPDES CONSTRUCTION GENERAL PERMIT. WHERE ISSUED, ARAP/401 REQUIREMENTS WILL PREVAIL IF IN CONFLICT WITH THESE BUFFER ZONE REQUIREMENTS.

Outfall	Sub-Outfall	Drainage Area (Ac.)	Slope (%)
1		0.215	2.4%
2		0.340	1.4%

* NOTE: TEMPOARY CONSTRUCTION ENTRANCES ARE TO BE USED AND LOCATION TO BE ESTABLISHED IN THE FIELD AS DIRECTED BY ENGINEER.

EROSION CONTROL QUANTITIES

ITEM NO.	DESCRIPTION	QUANTITY	UNIT
203-01	ROAD & DRAINAGE EXCAVATION (UNCLASSIFIED)	1,327	CY
209-02.03	8" TEMPORARY SLOPE DRAIN	2,640	L.F.
209-05	SEDIMENT REMOVAL	5,000	CY
209-08.02	TEMPORARY SILT FENCE (WITH BACKING)	23,795	LF
209-08.03	TEMPORARY SILT FENCE (WITHOUT BACKING)	1,306	LF
209-08.07	ROCK CHECK DAM	137	EACH
209-08.08	ENHANCED ROCK CHECK DAM	42	EACH
209-09.01	SANDBAGS	500	EACH
209-09.03	SEDIMENT FILTER BAG (15'X15')	5	EACH
209-20.03	POLYETHYLENE SHEETING (6 MIL. MINIMUM)	33	SY
209-40.30	CATCH BASIN PROTECTION (TYPE A)	9	EACH
209-40.33	CATCH BASIN PROTECTION (TYPE D)	66	EACH
209-40.34	CATCH BASIN PROTECTION (TYPE E)	6	EACH
209-40.41	CATCH BASIN FILTER ASSEMBLY (TYPE 1)	22	EACH
209-40.43	CATCH BASIN FILTER ASSEMBLY (TYPE 3)	30	EACH
209-40.45	CATCH BASIN FILTER ASSEMBLY (TYPE 5)	4	EACH
209-40.46	CATCH BASIN FILTER ASSEMBLY (TYPE 6)	34	EACH
209-40.47	CATCH BASIN FILTER ASSEMBLY (TYPE 7)	2	EACH
209-65.03	TEMPORARY DIVERSION CHANNEL	180	LF
209-65.04	TEMPORARY IN STREAM DIVERSION	144	LF
303-10.01	MINERAL AGGREGATE (SIZE 57)	884	TON
621-03.07	48" TEMPORARY DRAINAGE PIPE	85	LF
707-08.11	HIGH VISIBILITY CONSTRUCTION FENCE	15,620	LF
709-05.05	MACHINED RIP-RAP (CLASS A-3)	1,000	TON
709-05.06	MACHINED RIP-RAP (CLASS A-1)	2,172	TON
709-05.08	MACHINED RIP-RAP (CLASS B)	600	TON
740-10.03	GEOTEXTILE (TYPE III)(EROSION CONTROL)	7,196	SY
740-11.03	TEMPORARY SEDIMENT TUBE (18 IN)	15,995	LF



COORDINATES ARE NAD/83(1995), ARE DATUM ADJUSTED BY THE FACTOR OF 1.0001 AND TIED TO THE TGRN. ALL ELEVATIONS ARE REFERENCED TO THE NAVD 1988.

STATE OF TENNESSEE
DEPARTMENT OF TRANSPORTATION

EROSION CONTROL
CLEARING &
GRUBBING
I-640

STA. 105+80 TO STA. 114+00
SCALE: 1"= 50'